

# Promoting Resilience to Risks of Natural Hazards (PRERONA)



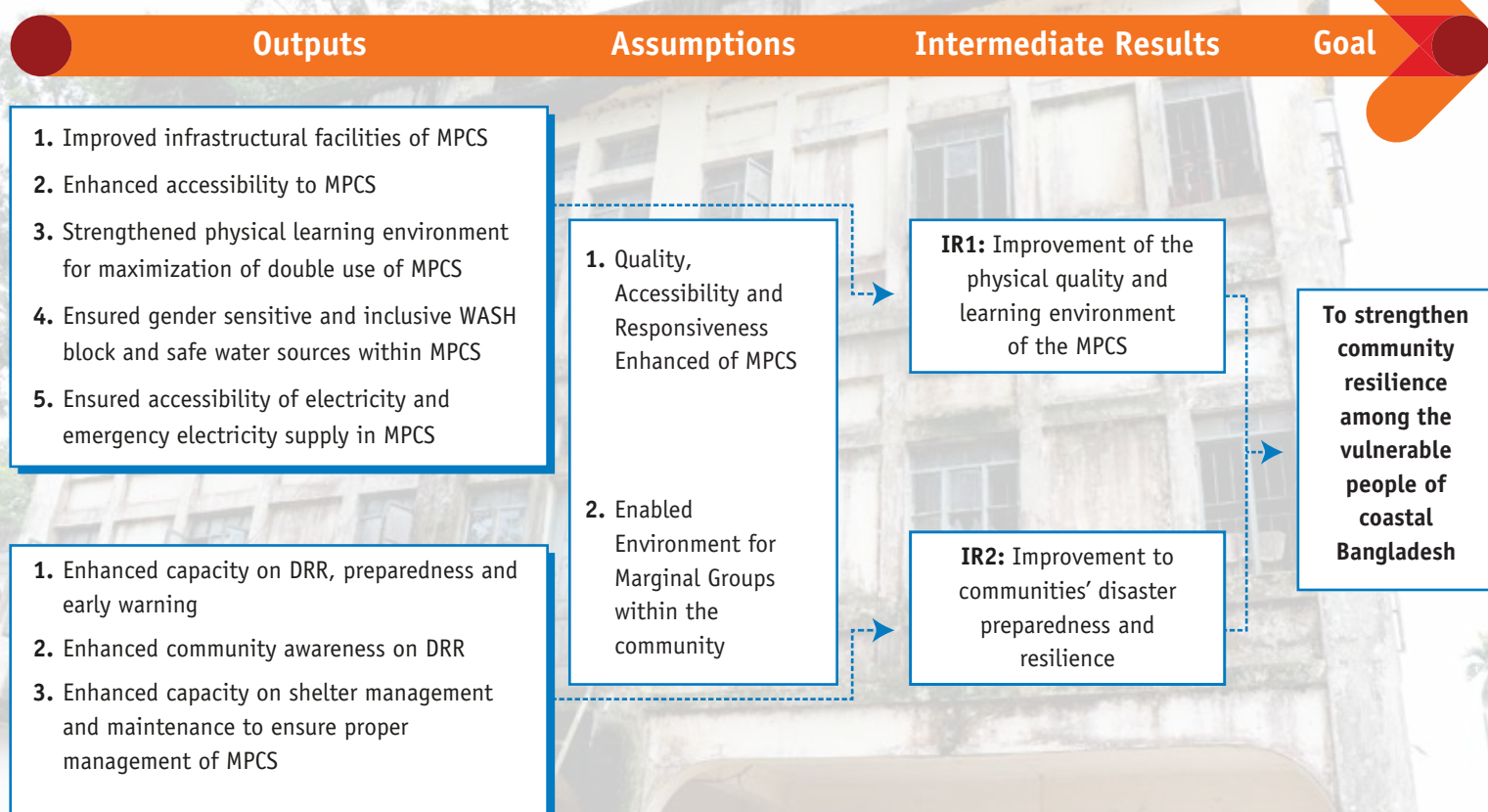
## BACKGROUND

Due to its unique geographic location, Bangladesh is among the most disaster-prone countries in the world, and Cox's Bazar is one of the most disaster-affected districts in Bangladesh. Flooding, deforestation, and the potential for increased frequency and intensity of tropical cyclones make this region vulnerable to natural hazards. To provide a safe space during natural disasters, many structures serve the dual role as both a shelter and a working primary school. In Cox's Bazar, there are more than 200 Government of Bangladesh (GoB) designated Multi-Purpose Cyclone Shelters (MPCS) across the sub-districts of Ramu, Maheskhali and Cox's Bazar Sadar. Many of these shelters are in varying stages of functionality and require repairs or upgrades to maximize their accommodative capacity during an emergency. The poor structural condition and frequent use of schools as emergency shelters impacts children's access to education, compounding already low rates of school enrolment and learning achievement in Cox's Bazar. There is a significant need to repair school infrastructures and replace damaged equipment for teachers and students.

PRERONA is implemented by CARE Bangladesh and funded by United States Agency for International Development (USAID), the U.S. Government's lead development agency, to support communities in Cox's Bazar to anticipate and be resilient to natural hazards and disasters. Through physical improvements to MPCS, communities will have safe, accessible shelter and school infrastructure that is adapted to natural hazards and that reduces disaster risk. In addition, through local capacity building, communities will be better able to plan for disasters in order to increase resilience, reduce climate change impact and ensure continuity of education. The program will support the Government of Bangladesh, particularly the Ministry of Primary and Mass Education and local government, to maintain facilities that are essential to the disaster preparedness of communities in Cox's Bazar.

There are more than 200 Government of Bangladesh (GoB) designated Multi-Purpose Cyclone Shelters (MPCS) across the sub-districts of Ramu, Maheskhali and Cox's Bazar Sadar. Many of these shelters are in varying stages of functionality and require repairs or upgrades to maximize their accommodative capacity during an emergency.

## PRERONA'S (ENVISAGED) DEVELOPMENT PATHWAYS



## PROJECT WORKING AREA AND BENEFICIARIES

**Project Duration:** May 2019 to May 2021

### Targeted Beneficiaries

Upazila	No of MPCS	Population Coverage during Disaster			Students in Normal Period		
		Total	Male	Female	Total	Boys	Girls
Cox's Bazar Sadar	40	39,452	23,671	15,781	14,500	7,178	7,323
Ramu	30	22,717	13,630	9,087	10,100	5,000	5,101
Maheskhali	26	17,867	10,720	7,147	7,250	3,589	3,661
<b>Grand Total</b>	<b>96*</b>	<b>80,036</b>	<b>48,021</b>	<b>32,014</b>	<b>31,850</b>	<b>15,766</b>	<b>16,084</b>

Source: Centre for Climate Change and Environmental Research (C3ER) MPCS Scoping Assessment, 2019

\*The number may vary depending on overlapping with other ongoing initiatives and subject to finding other MPCSs viable for repair and refurbishment



## PROJECT APPROACH

### REPAIR & REFURBISHMENT

Subcontract local vendors for structural repair work, electrical and WASH facilities, approach roads and school furniture



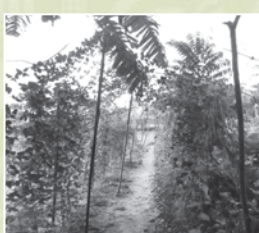
### COMMUNITY ENGAGEMENT

Increase community engagement in structural repair work through Cash for Work (CfW) and involve community in monitoring project interventions



### CLIMATE SMART

Promote climate-smart interventions such as solar system, rainwater harvesting and plantation



### IMPROVED COORDINATION

Develop an effective coordination mechanism to promote accountable and sustainable management of the MPCS



### CAPACITY BUILDING

Capacity building and community awareness on cyclone shelter maintenance, Disaster Risk Reduction (DRR) and Climate Change Adaptation (CCA)



**Contact:**  
Mrityunjay Das  
Program Coordinator, Humanitarian & Resilience  
Phone: +880-2-9889009, ext: 146  
Email: mrityunjay.das@care.org

**CARE Bangladesh**  
RAOWA Complex (Level 7), VIP Road,  
Mohakhali, Dhaka 1206, Bangladesh  
Phone : +880-2-9889009 | www.carebangladesh.org  
Fax : +880-2-9118347 | Email: bgdinfo@care.org